

## Full-time Undergraduate Programmes For JUPAS Applicants (HKDSE)

[Programmes on Offer](#) [Admission Requirements & Figures](#) [Admission Policies](#) [Applying to PolyU](#) [Fees/Financial Assistance](#) [FAQs](#)

[Faculty of Construction and Environment > Department of Building and Real Estate](#)

[▶ Back to Programme List](#)

### Higher Diploma in Building Technology and Management (Engineering)

#### 建築科技及管理學高級文憑(工程)

Sept 2017 Entry  
Programme code: JS3038

Duration & Credit Requirement

Aims & Characteristics

Recognition & Prospects

Curriculum

Entrance Requirements & Subject Weightings

Admission Score Calculation

Enquiries

Student Message

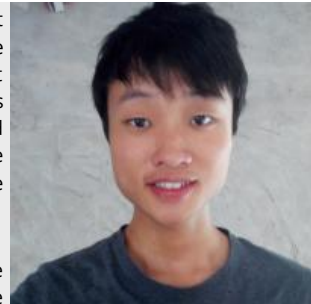
Additional Documents Required

Interview Arrangement

### Student Message

During my two years of study at BRE I gained precious knowledge about building technologies, management and economics, which will help me to face future challenges. The HD in Building Technology and Management (Engineering) programme aims not only to introduce students to numerous theories but also to emphasise practice and help students develop a solid foundation in construction by providing industrial training. In addition, the programme's curriculum is frequently reviewed by professors who have close connections with the construction industry.

The Department expends many teaching resources on its students, and the academic staff are willing to offer continuous support whenever difficulties are encountered. Their guidance enhanced my critical thinking and enriched my understanding of the industry. I strongly believe that it is a wise decision to study at BRE.



**Lee Chun Ting, Desmond**

[JUPAS Applicants](#) | [Non-JUPAS Applicants](#) | [Associate Degree and Higher Diploma Graduates](#)  
[內地應屆高考生](#) | [International Students](#) | [Postgraduate Studies](#)

Privacy Statement

Disclaimer: Information on this website is accurate at the time of posting and may be subject to change from time to time. The University reserves the right to amend the information without prior notification.

If you find any aspect of this website inaccessible or encounter any difficulty in use, please contact us at [aswebapp@polyu.edu.hk](mailto:aswebapp@polyu.edu.hk)

Copyright © 2014-2016 The Hong Kong Polytechnic University. All rights reserved.

This website is best viewed in Google Chrome.